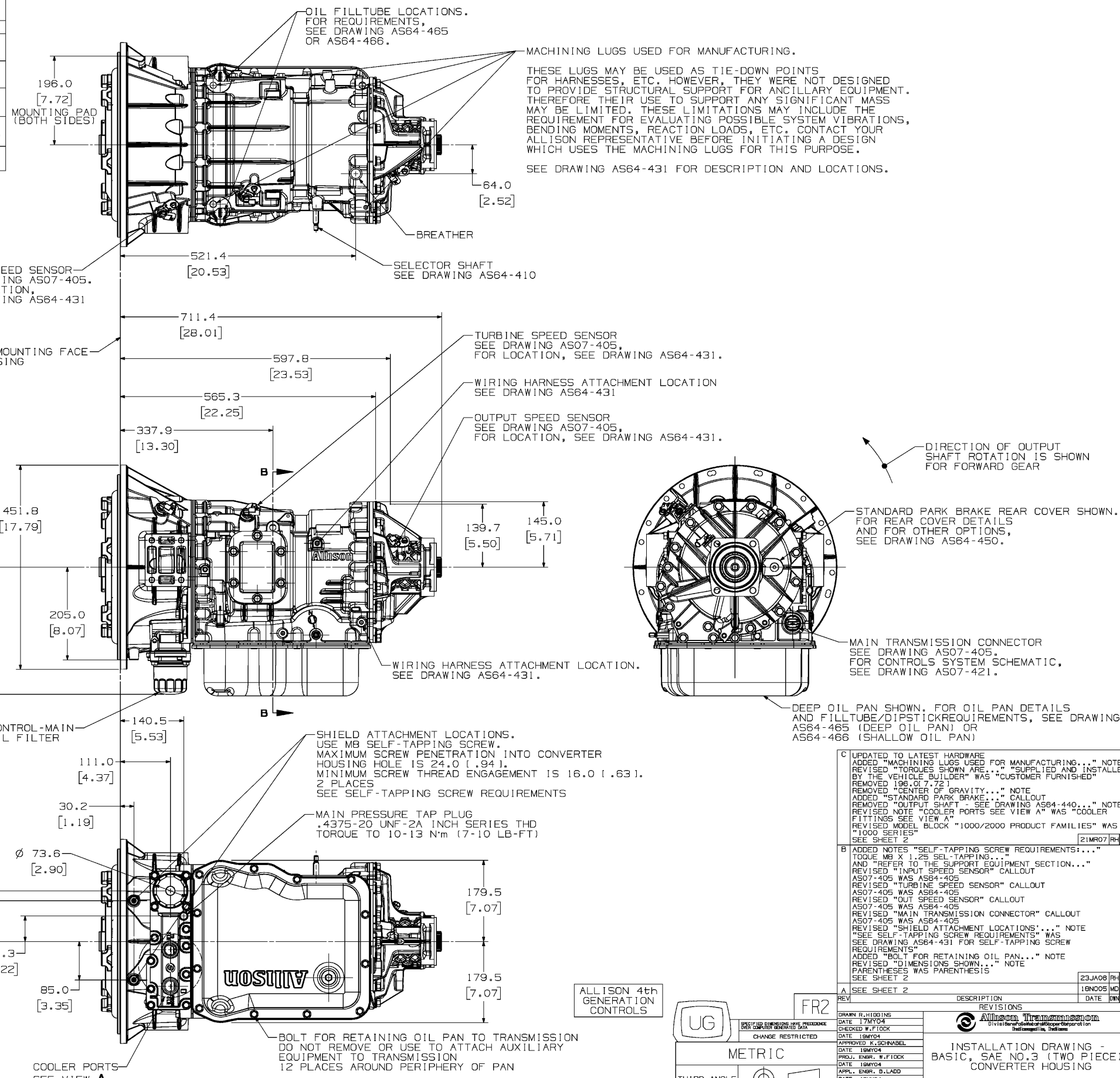


REMOVAL AND INSTALLATION CLEARANCES

PART/ASSEMBLY	DIMENSION	DIRECTION*	DESCRIPTION
EXTERNAL OIL FILTER	100 [3.94]	VERTICAL	CLEARANCE REQUIRED FROM FILTER-CONVERTER HOUSING SPLITLINE.
OIL PAN	240 [9.45]	VERTICAL	CLEARANCE REQUIRED FROM OIL PAN-MAIN CASE SPLITLINE.
SPEED SENSORS	75 [2.95]	PERPENDICULAR	CLEARANCE REQUIRED FROM SPEED SENSOR-TRANSMISSION MOUNTING SURFACE.
MAIN TRANSMISSION CONNECTOR	1880 [7.09]	HORIZONTAL	CLEARANCE REQUIRED FROM CONNECTOR-TRANSMISSION MOUNTING SURFACE.

* TRANSMISSION VIEWED FROM SIDE



SELF-TAPPING SCREW REQUIREMENTS:
 HEX WASHER-HEAD THREAD-FORMING SCREW
 DIN 7500 - TYPE D HEAD
 DIN 933, BN3326 ZINC PLATED
 M8 X 1.25 X VARIOUS LENGTHS

TORQUE M8 X 1.25 SELF-TAPPING SCREWS AT LOCATION SHOWN TO 20-30 N·m (15-22 LB-FT)

REFER TO THE SUPPORT EQUIPMENT SECTION OF THE INSTALLATION MANUAL FOR SOURCES FOR SELF-TAPPING SCREWS.

TORQUES SHOWN ARE FOR PLAIN (NON-PLATED) FASTENERS AND OTHER THREADED COMPONENTS SUPPLIED AND INSTALLED BY THE VEHICLE BUILDER. TORQUE REQUIREMENTS SHOULD BE REVIEWED IF PLATED FASTENERS WILL BE USED. CONSULT THE SUPPLIER.

FOR TRANSMISSION SPECIFICATIONS NOT SHOWN, REFER TO "TRANSMISSION SPECIFICATION" SECTION.

ALL EXTERNAL CONTROLS REQUIRE ALLISON TRANSMISSION ENGINEERING APPROVAL. FOR SHIFT SELECTOR AND CABLE SYSTEM DESIGN REQUIREMENTS, SEE TECHNICAL DOCUMENT 177 (TD-177).

C UPDATED TO LATEST HARDWARE ADDED "MACHINING LUGS USED FOR MANUFACTURING..." NOTE REVISED "TORQUES SHOWN ARE..." "SUPPLIED AND INSTALLED BY THE VEHICLE BUILDER" WAS "CUSTOMER FURNISHED" REMOVED "CENTER OF GRAVITY..." NOTE ADDED "STANDARD PARK BRAKE..." CALLOUT REMOVED "OUTPUT SHAFT - SEE DRAWING AS64-440..." NOTE REVISED NOTE "COOLER PORTS SEE VIEW A" WAS "COOLER FITTINGS SEE VIEW A" REVISED MODEL BLOCK "1000/2000 PRODUCT FAMILIES" WAS "1000 SERIES" SEE SHEET 2 [21MR07]RH-WF

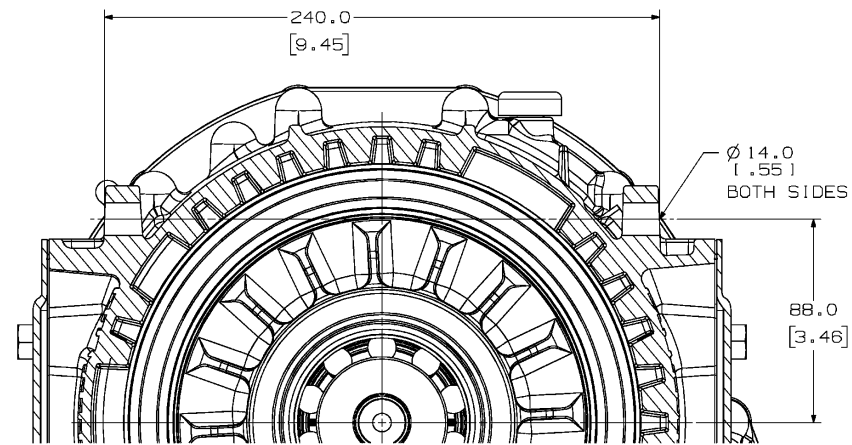
B ADDED NOTES "SELF-TAPPING SCREW REQUIREMENTS..." TORQUE M8 X 1.25 SEL-TAPPING... AND "REFER TO THE SUPPORT EQUIPMENT SECTION..." REVISED "INPUT SPEED SENSOR" CALLOUT AS07-405 WAS AS64-405 REVISED "TURBINE SPEED SENSOR" CALLOUT AS07-405 WAS AS64-405 REVISED "OUTPUT SPEED SENSOR" CALLOUT AS07-405 WAS AS64-405 REVISED "MAIN TRANSMISSION CONNECTOR" CALLOUT AS07-405 WAS AS64-405 REVISED "SHIELD ATTACHMENT LOCATIONS..." NOTE "SEE SELF-TAPPING SCREW REQUIREMENTS" WAS "SEE DRAWING AS64-431 FOR SELF-TAPPING SCREW REQUIREMENTS" ADDED "BOLT FOR RETAINING OIL PAN..." NOTE PARENTHESSES WAS PARENTHESIS SEE SHEET 2 [23JA08]RH-JH

A SEE SHEET 2 [18NO05]MCMF

UG	FR2	DATE 17MY04	APPROVED K. SCHNABEL
METRIC		CHECKED W.F. FOCK	DATE 18MY04
THIRD ANGLE		DATE 18MY04	APPL. ENGR. S. LADD
DATE 18MY04		CHANGED RESTRICTED	DATE 18MY04
SPECIFIED DIMENSIONS HAVE PRECEDENCE OVER COMPUTER GENERATED DATA		REVISIONS DATE DESCRIPTION 18NO05 MCMF DATE DIMENK	
ALLISON Transmission Division of Allison Transmission Corporation 1000/2000 Product Families		INSTALLATION DRAWING - BASIC, SAE NO. 3 (TWO PIECE) CONVERTER HOUSING	
MODEL 1000/2000 PRODUCT FAMILIES SIZE/CAGE CODE DWG NO R 73342 AS64-402		SCALE NONE SHEET 1 OF 2 UNIGRAPHICS	

DIMENSIONS SHOWN IN PARENTHESSES ARE IN INCHES AND ARE FOR REFERENCE ONLY

FR1 DWG. NO. AS64-402 LTR SH C I



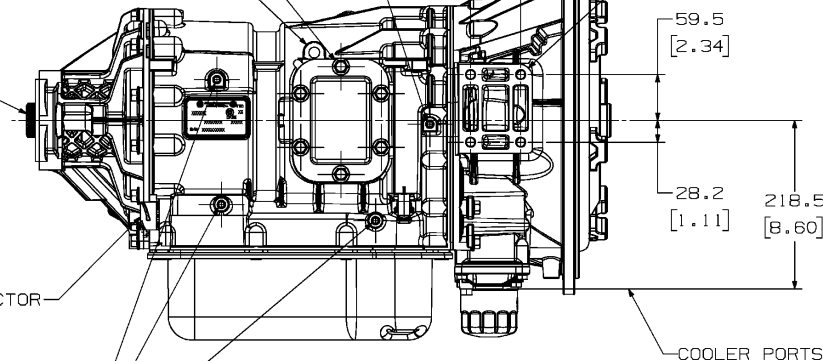
SECTION B-B

OUTPUT SHAFT - SEE DRAWING AS64-440
 FOR AVAILABLE OUTPUT FLANGES - SEE DRAWING AS64-441
 FOR AVAILABLE OUTPUT YOKES - SEE DRAWING AS64-442

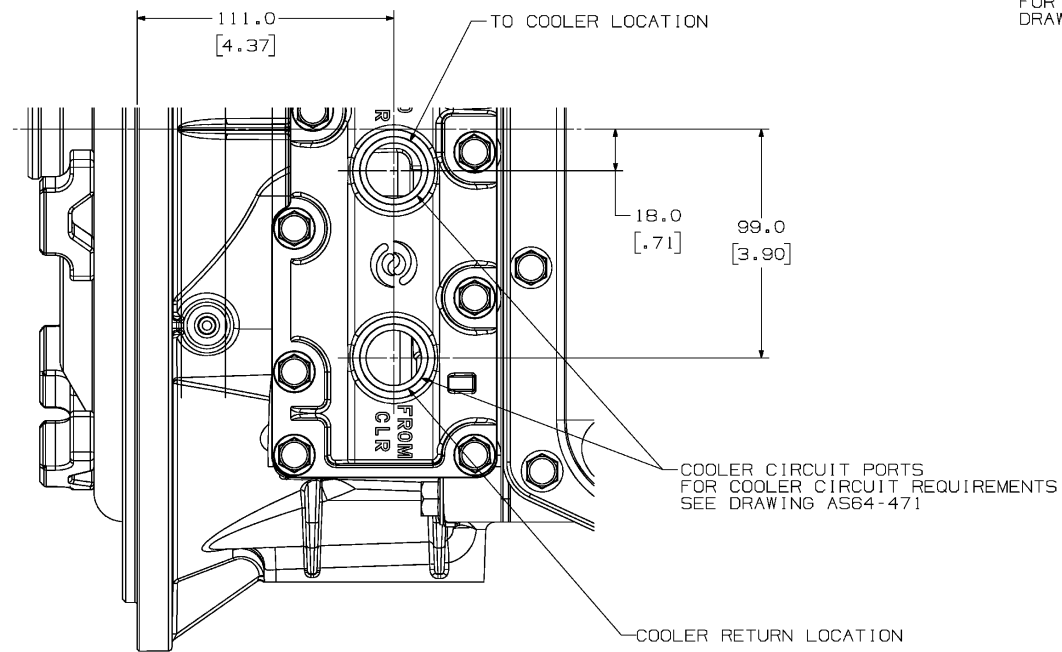
OIL FILLTUBE MOUNTING BRACKET LOCATION (BOTH SIDES) SEE DRAWING AS64-465 OR AS64-466

SAE 6-BOLT POWER TAKE-OFF MOUNTING PAD (BOTH SIDES) SEE DRAWING AS64-480

PROVISION FOR LIFTING TRANSMISSION (BOTH SIDES)



RIGHT SIDE VIEW



VIEW A

MAIN TRANSMISSION CONNECTOR SEE DRAWING AS07-405. FOR LOCATIONS, SEE DRAWING AS64-431

WIRING HARNESS ATTACHMENT LOCATIONS, SEE DRAWING AS64-431

ALLISON 4th GENERATION CONTROLS



FR2

METRIC



DIMENSIONS SHOWN IN PARENTHESES ARE IN INCHES AND ARE FOR REFERENCE ONLY

FR1 DWG. NO. AS64-402 LTR SH C 2

REV	DESCRIPTION	DATE	CHK
C	REVISED COOLER CIRCUIT... "PORTS" WAS "FITTINGS" CALLOUT "REVISED CALLOUT "COOLER PORTS" WAS "COOLER FITTINGS" ADDED "OUTPUT SHAFT -..." CALLOUT	21MR07	PH-WF
B	REVISED "MAIN TRANSMISSION CONNECTOR" NOTE AS07-405 WAS AS64-405 REVISED "DIMENSIONS SHOWN..." NOTE PARENTHESES WAS PARENTHESIS	23JA08	PH-LH
A	REVISED COOLER CIRCUIT FITTING NOTE	18NO05	MD-WF

REVISIONS	
DRWN R. HIGGINS	DATE 17MY04
CHECKED W. F. TOCK	DATE 18MY04
APPROVED K. SCHNABEL	DATE 18MY04
PROJ. ENGR. W. F. TOCK	DATE 18MY04
APPL. ENGR. B. LADD	DATE 18MY04

MODEL	1000/2000 PRODUCT FAMILIES
SIZE	CAGE CODE DWG NO
R 73342	AS64-402
SCALE	NONE
SHEET	2

THE INFORMATION CONTAINED HEREIN IS PROPRIETARY AND THE PROPERTY OF ALLISON TRANSMISSION, GENERAL MOTORS CORPORATION AND MAY NOT BE REPRODUCED, DISCLOSED OR USED FOR ANY PURPOSE OTHER THAN A QUOTATION TO OR AN ORDER FROM ALLISON TRANSMISSION WITHOUT THE SPECIFIC WRITTEN AUTHORIZATION OF ALLISON TRANSMISSION.

AS64-402